

Installation Dimensiones (mm)

H=wardrobe internal height
 h=door height
 LT=wardrobe internal depth
 T=door thickness
 wardrobe internal depth:
 LT=95(min)
 Door height= $H-12_0^{+3}$
 Door thickness: $T \geq 16$

Distance from door bottom to bottom track surface: 2~11

W=door width door
 L=wardrobe internal width
 Width: $W=L/2+15$

Door self closing distance $k=50$

Sliding Door Drilling Dimensions (mm)

Top track and bottom track installation dimensions

Top and Bottom Track



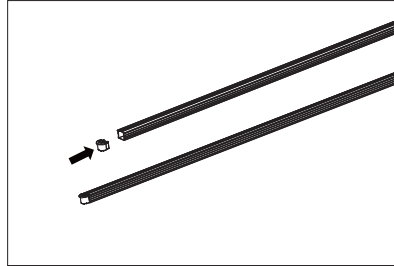
Installation Guide

MOD. JCSS01SET

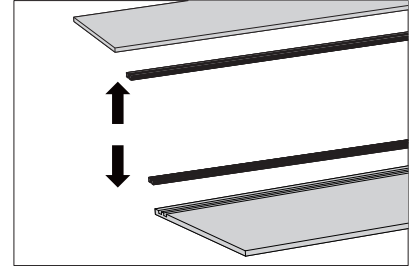
Installation



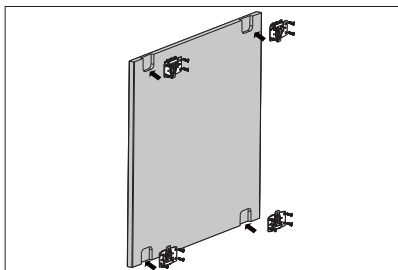
Install damper



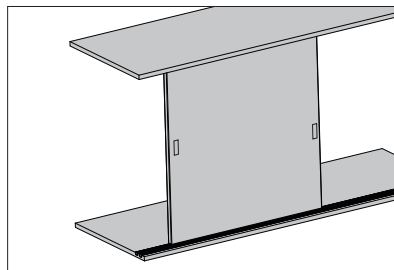
Install track plug (optional)



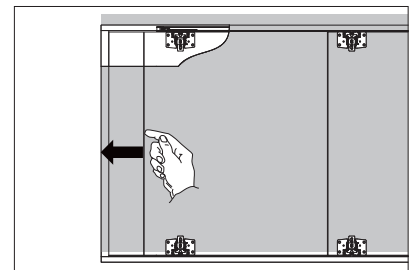
Install the track



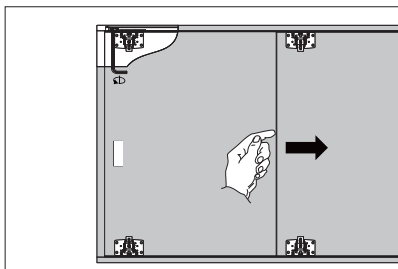
Install insert-type roller



Mount the door

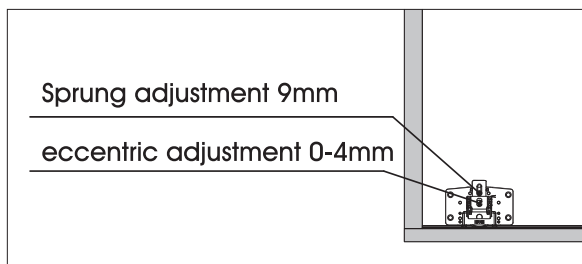


Push the door to the fully close position and locate the position for the damper



Pull the door open, then fix the damper with an Allen key

Adjustment



Insert-type roller adjustment

Sold separately

JCSS06TRACK Track 19.7ft
JCSS03TRACK Track 10ft

