

DOOR LOCKS

GUADALAJARA

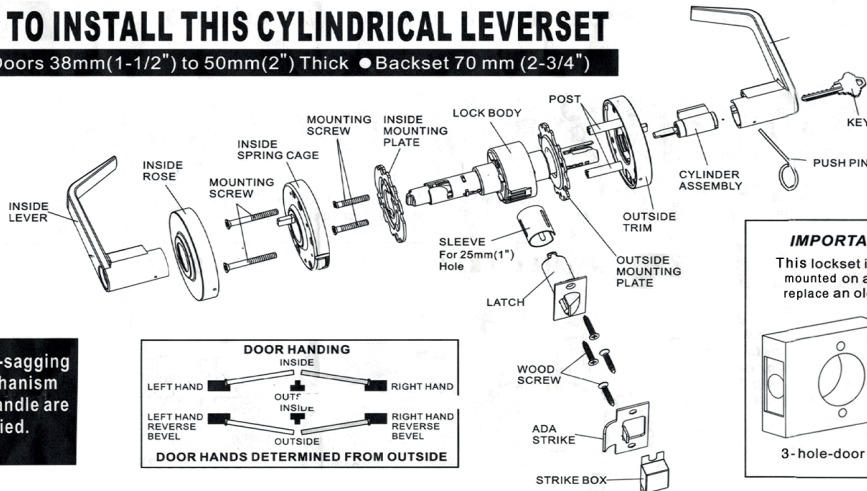


INSTALLATION GUIDE

9445ST-SC / 9145ET-SC / 9245BK-SC

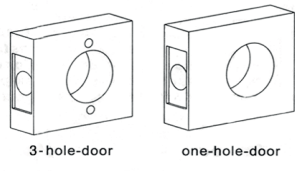
HOW TO INSTALL THIS CYLINDRICAL LEVERSET

• Fit Doors 38mm (1-1/2") to 50mm (2") Thick • Backset 70 mm (2-3/4")



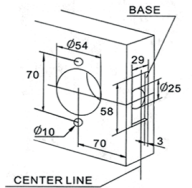
IMPORTANT! READ FIRST

This lockset is designed to be mounted on a new 3-hole-door or replace an old lock on one-hole-door.



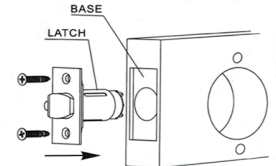
New Door Preparation

- A:** Fold template on edge of door mark site 70mm (2-3/4") of holes.
- B:** Drill a $\varnothing 54\text{mm}$ (2-1/8") hole and two 10mm (3/8") holes through door (from both sides to avoid damaging door).
- C:** Drill a $\varnothing 25\text{mm}$ (1") hole in door edge.
- D:** Cut out a 58x29x3mm (2-9/32"x1-1/8"x1/8") base.

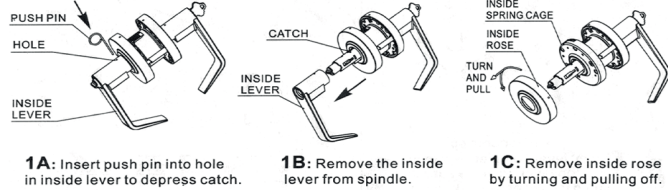


Install Latch

Insert latch unit and fix it with two wood screws.



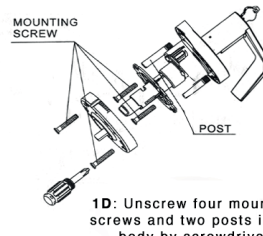
1 DISASSEMBLE INSIDE LEVER AND ROSE, ADJUST OUTSIDE MOUNTING PLATE TO SUIT DOOR THICKNESS



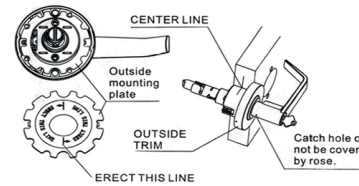
1A: Insert push pin into hole in inside lever to depress catch.

1B: Remove the inside lever from spindle.

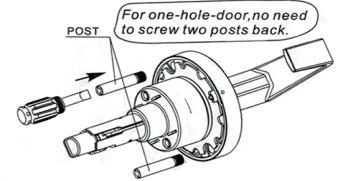
1C: Remove inside rose by turning and pulling off.



1D: Unscrew four mounting screws and two posts in lock body by screwdriver



1E: Screw outside mounting plate according to the door thickness, make sure the lock body at both sides symmetrical.



1F: Screw two posts back for next installation (only for 3-hole-door).

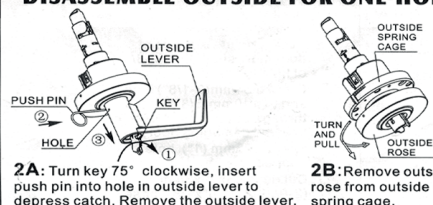
2 DISASSEMBLE OUTSIDE FOR ONE-HOLE DOOR INSTALLATION OR CYLINDER REPLACEMENT

one-hole-door installation

1. new lock on a new one-hole-door.
2. old lock replacement on an old one-hole-door. follow steps 2A to 2H.

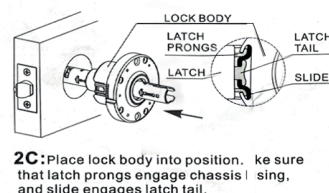
3-hole-door goto step 3A directly.

cylinder replacement refer to 2A, 2G and 2H

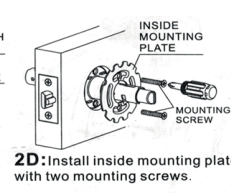


2A: Turn key 75° clockwise, insert push pin into hole in outside lever to depress catch. Remove the outside lever.

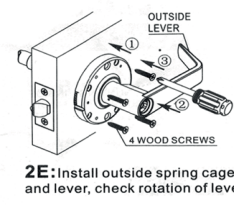
2B: Remove outside rose from outside spring cage.



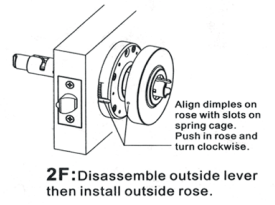
2C: Place lock body into position. Make sure that latch prongs engage chassis housing, and slide engages latch tail.



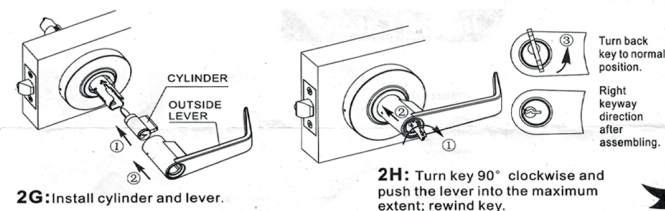
2D: Install inside mounting plate with two mounting screws.



2E: Install outside spring cage and lever, check rotation of lever.



2F: Disassemble outside lever then install outside rose.



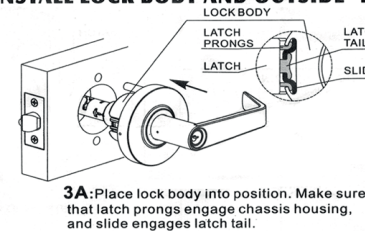
2G: Install cylinder and lever.

2H: Turn key 90° clockwise and push the lever into the maximum extent; rewind key.

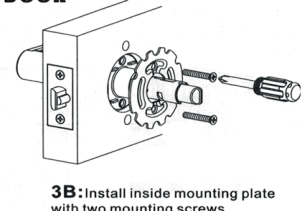
All special steps for one-hole-door are completed. Go to step 4A for subsequent installation steps.

3

INSTALL LOCK BODY AND OUTSIDE TO DOOR

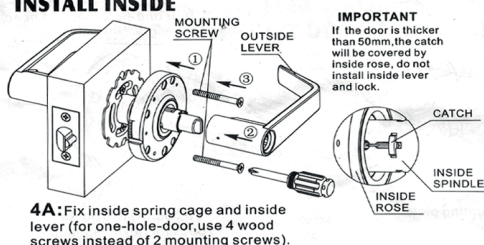


3A: Place lock body into position. Make sure that latch prongs engage chassis housing, and slide engages latch tail.

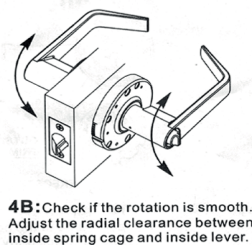


3B: Install inside mounting plate with two mounting screws.

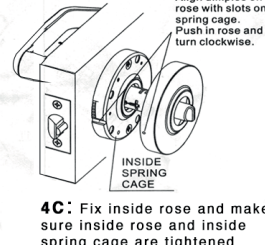
4 INSTALL INSIDE



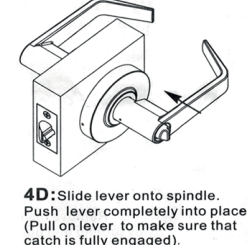
4A: Fix inside spring cage and inside lever (for one-hole-door, use 4 wood screws instead of 2 mounting screws).



4B: Check if the rotation is smooth. Adjust the radial clearance between inside spring cage and inside lever.

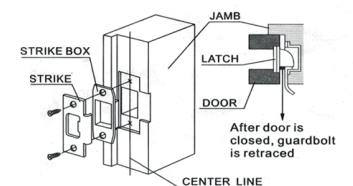


4C: Fix inside rose and make sure inside rose and inside spring cage are tightened



4D: Slide lever onto spindle. Push lever completely into place. (Pull on lever to make sure that catch is fully engaged).

5 INSTALL STRIKE



After door is closed, guardbolt is retracted